



Urban planning

Polycomposite, by placing itself on the market for urban elements, intends to offer you special products made to measure, unlimited colours, shapes or textures.

Our idea is to respond to and develop your most ambitious projects.

Some examples: **seafront elements, balustrades, humps, planters, benches, light sheltering frames, etc...**



Industry

Thanks to the technical performances of polymer concrete, Polycomposite is now developing towards various industrial sectors: chemical, oil, automobile, railways.

Our products are extremely appealing for such industrial fields because of their longevity and their resistance to chemical and liquid agents.

Only think about **containers for citric acid, supporting bases for machinery, tanks for dangerous products, gutters for gas stations, etc ...**



Polycomposite in Europe



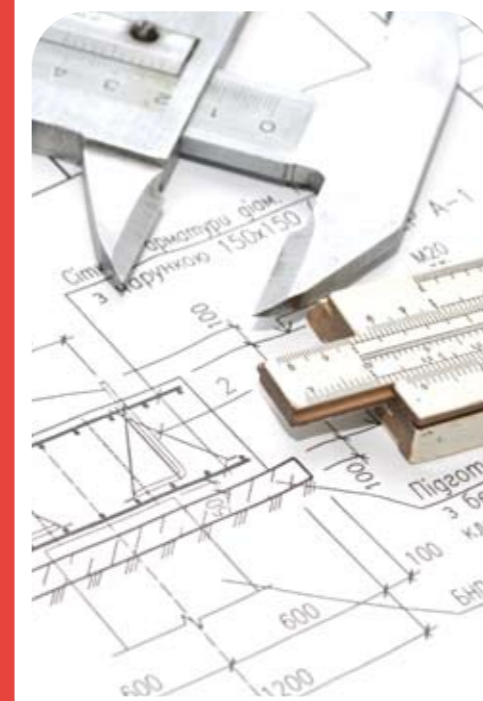
Polycomposite - 6, rue de l'industrie - 68700 Cernay France
Tél. : +33 (0)3 89 37 62 62 - Fax : +33 (0)3 89 37 62 60 - info@polycomposite.fr

www.polycomposite.fr


poly|composite.
by Mäder

Polymer concrete made to measure: it's our job!

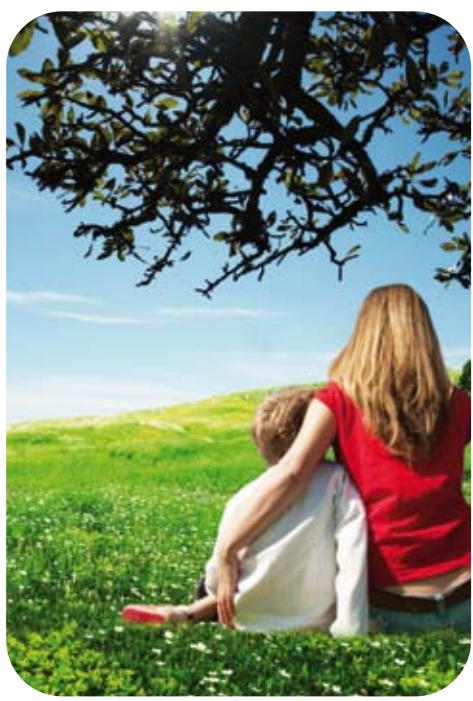
We create



We protect



We respect



Our aim: to provide you the right solutions!

poly|composite.
by Mäder



The company

Polycomposite company was created in 2004 in Alsace by Mr LEGENDRE and Mr. KEMPF. It is one of the major companies in polymer concrete technology in France in the areas of drainage system, civil engineering, building and urban planning.

Due to its perfect mastery of polymer concrete, Polycomposite wishes to place itself as a privileged partner of the different actors in construction.

Our presence on the territory and our reactivity allow us to be prompt in meeting the needs of our partners by accompanying them from the stage of design to that of the realisation of their projects through our technical expertise.

The aim of our company is to **solve the problems of our customers** by:

- the **exceptional intrinsic characteristics** of polymer concrete (total resistance to pH 1 to 14, to H₂S, totally waterproof, resistance to graffiti, colouring in full mass, etc ...)
- **developing parts uniquely** tailored to meet your needs concerning weight, congestion, shape and implementation.



Imagine, conceive, accompany

Mäder Group

Polycomposite has recently opened its capital to Mäder group so to increase its means of production, thereby supporting its dynamic.

Mäder Group is a major European leader in the field of industrial paint and resin products.

Polymer Concrete: a definitely modern product

Polymer Concrete is a resin-based concrete which meets the NFP 15-564 standards.

This material was employed overseas since the 40ies.

The realization of polymer concrete requires **neither water, nor cement or metal!**

It is only **made out of resins** (Polyester, Vinylester, Acrylic) and **aggregates** (aggregates of quartz 0.1 to 12mm).

An environmentally friendly product

Polycomposite, mindful of environmental issues, is developing a respectful production, not only through its products but also through its means of production.

Polymer concrete is a material 100% recyclable and completely inert after polymerization.

The process requires neither water nor cement (high energy costs): this has placed it in a perfect position as far as sustainable development issues are concerned.

Intrinsic characteristics of polymer concrete

Chemical:

- Total resistance to aggression of effluents without any treatment; resistance from 1 to 14 pH
- Total resistance to H₂S and chemicals
- Total resistance to hydrocarbons

Hydraulic:

- Excellent flow coefficient: Manning Strickler average 108, providing a self-cleaning material thus augmenting the rate of flow
- Fully waterproof through the very low porosity of the surface of polymer concrete
- Excellent resistance to abrasion: the abrasion coefficient allows you to preserve the hydraulic qualities

Physical:

- Insensitive to the phenomenon of freezing / thawing
- Lighter than classic concrete structures
- Resistant to graffiti (cleans without traces)
- Resistant to sea salt and road salt
- Possibility to mass dye the product or to colour it by applying a Top Coat

Polymer Concrete and Traditional Concrete comparative board

CHARACTERISTICS	Polymer Concrete	Classic Concrete	Standard
Binder	Resin + Quartz	Cement + Water	
Compression value	De 80 to 90 MPa	De 20 to 30 MPa	NF-EN-196-1
Pull flexion	De 20 to 24 MPa	De 4 to 6 MPa	NF-EN-196-1
Young modulus (elasticity)	21 300 MPa	20 000MPa	DIN 51 290/3
Abrasion	1,15	> 2	DI-EL-97-024
Water absorption	0,2%	8.10%	UNE 22 191
Density	2 109 Kg/m ³	2 300 Kg/m ³	
Flow coefficient (Manning Strickler)	108	De 60 to 90	NF EN 752-4
Frost resistance	Unaltered	Damage, cracks with mass losses	UNE 127 004
Fire Resistance	M0 – M1	M0	NF P 92 500

A highly reactive manufacturing process

Our manufacturing processes largely differ from the classical ones. It only takes approximately **20 minutes** to mould a piece in polymer concrete with our technology, and highest resistance is obtained in no more than **16 hours**, as opposed to the **28 days needed for classical concrete**.

With this technology, we can respond promptly to various requests from our partners.



Drainage system

Polycomposite specializes in the manufacture of prefabricated items for drainage system.

With its experience and flexibility it offers items such as **cunettes, ovoids, reflux sites, fish traps** or **containers** of different shapes and sizes.

Polycomposite largely differs from its competitors by offering highly chemically resistant products made to measure.

The intention is to provide our partners with solutions for their needs and problems.



Building - Civil Engineering

In building and civil engineering, polymer concrete is employed with the aim to adapt to the functional, technical and aesthetic requirements of the project.

Due to the characteristics of polymer concrete, we are able to make: **bridge elements, guardrails, facades of buildings, galleries** for dry and wet networks, **heating gutters** and other works requiring specific technical input.

Our special M0 formation also enables us to intervene inside the tunnels for elements such as: **slotted gutter, edging gullies, fire trap** etc...

